



Company : Overseas Energy Holdings Ltd

Well : Westwood 1

Interval : 986.00 - 1322.74 meters

Created : 17/Dec/2009 9:35:55 AM

OEH
OVERSEAS ENERGY HOLDINGS LTD

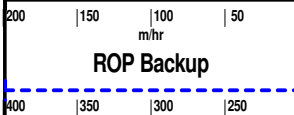
INTEQ

DRILLING DATA PLOT

ROP

WOB Avg

INTERPRETED
LITHOLOGY



WOB: 15 - 44 klbf
RPM: 90 - 105
FLOW: 195 - 439 gpm
SPP: 589 - 749 psi

NB5: 216mm (8-1/2")
Security EBXS20DS Tri-Cone
Jets: 3x18
In: 1005.0m Out: 1073.0m
Drilled 68.0m in 15.3 hrs
Grading: xxxxxxxxxx

MW: 9.3ppg (1.11sg) FV: 40
PV: 12 GELS: 8/14 KCl: 0.0%
YP: 17 pH: 9.0

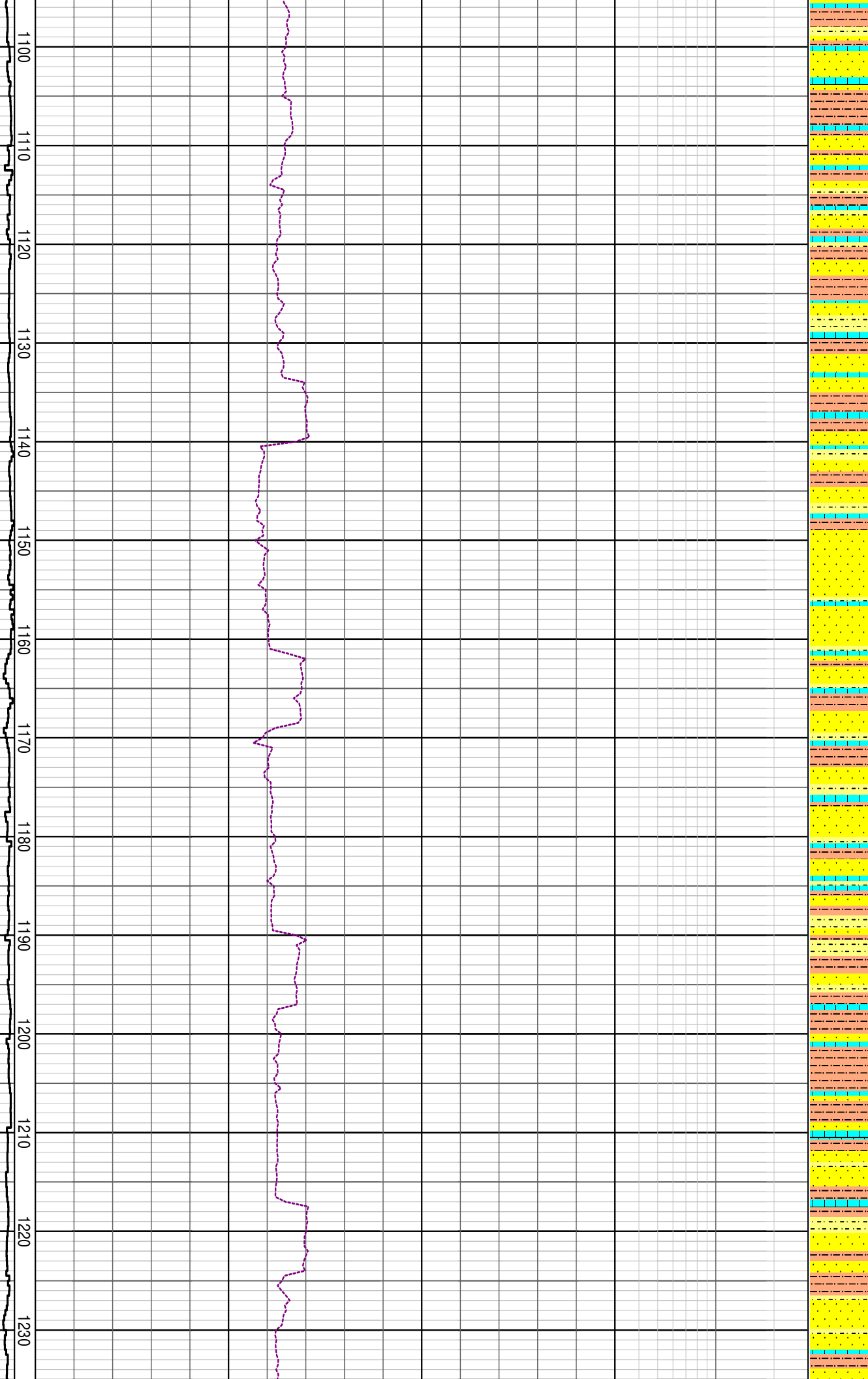
RR5: 216mm (8-1/2")
Security EBXS20DS Tri-Cone
Jets: 3x18
In: 1073.0m Out: xxxm
Drilled xx.xm in xx.x hrs
Grading: xxxxxxxxxx

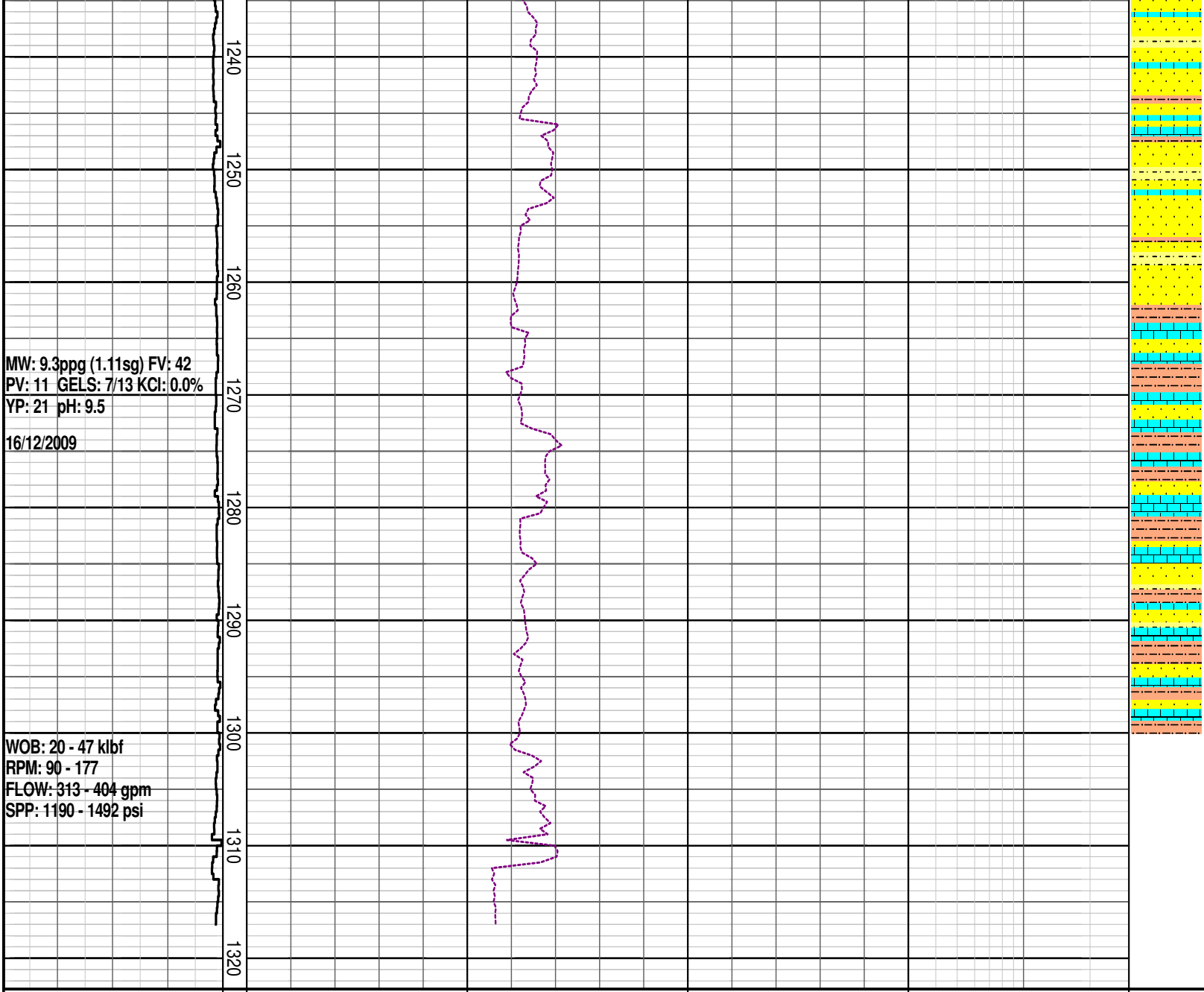
14/12/2009
MW: 9.3ppg (1.11sg) FV: 45
PV: 10 GELS: 1/8 KCl: 0.0%

V: 10 GELS: 40 ROL: 0.0 %
YP: 10 pH: 8.5

WOB: 8 - 45 klbf
RPM: 24 - 236
FLOW: 215 - 400 gpm
SPP: 691 - 1347 psi

WOB: 14 - 46 klbf
RPM: 37 - 186
FLOW: 305 - 413 gpm
SPP: 1061 - 1379 psi
15/12/2009





DRILLING DATA PLOT

